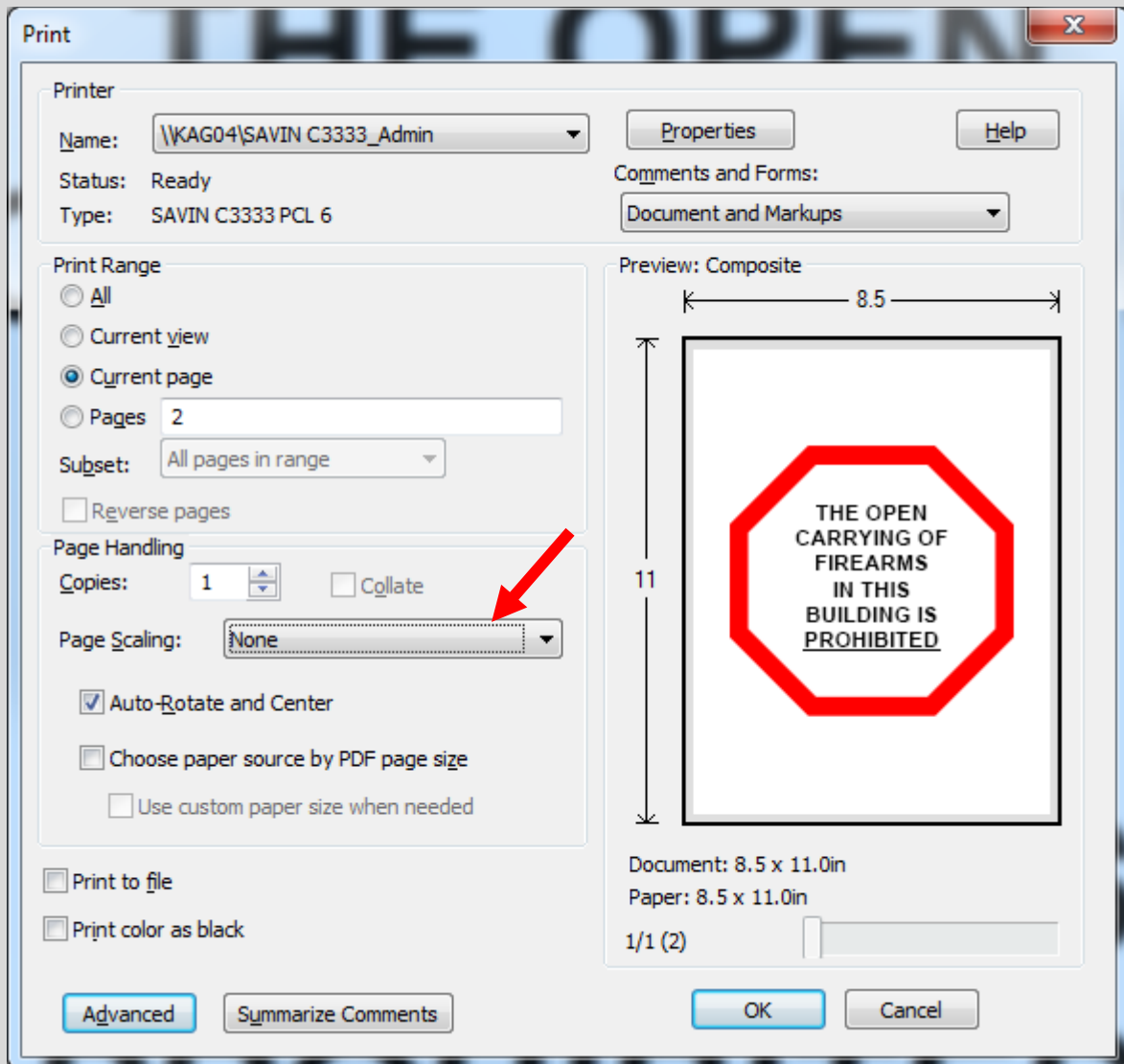


# Open Carry Prohibited Proposed Signage Adopted by the Kansas Attorney General Effective July 1, 2014

## PRINTING INSTRUCTIONS

To ensure that the graphic prints at the size required by the regulation, in the PDF print dialog window, be sure that **“Page Scaling”** is set to **“None.”**





**THE OPEN  
CARRYING OF  
FIREARMS  
IN THIS  
BUILDING IS  
PROHIBITED**